



Safety Information and Warning Sheet

Description:

The VariCap, Model # VC-0001 is a Cal/OSHA approved impalement protection cover used to guard against the dangers of rebar, ranging from #4-#11, on construction sites. The VariCap may be used at or above grade. The VariCap is designed to protect against impalement from a maximum fall height not to exceed 7 ½ feet.

Safety Information:

1. Before using the VariCap please read the safety information and understand the installation instructions. If you have any questions please contact VariCap before using this product at sales@varicap.org or 947-224-8802.
2. The VariCap model #VC-0001 has been designed, tested, and approved by Cal/OSHA as an impalement protection device to be used at or above grade.
3. The VariCap has a maximum fall height not to exceed 7'1/2" as specified by Cal/OSHA.
4. The VariCap can be used on rebar sizes from #4-#11.
5. Failure to install the VariCap properly might damage the product and result in serious injury or death.
6. The VariCap is designed to be used multiple times.
7. Any VariCap must be inspected prior to use for damage. If the stabilizing fins of the yellow end cap are damaged to the point that the cap will not sit squarely on the rebar, please recycle the end cap and replace with a new one.
8. If the VariCap is subject to an impact from a fall or any other object, discard and replace.
9. If the cap is not a minimum of 4"x4" for any reason, is bent, or either the internal orange or end cap yellow fins are damaged, please discard and replace.
10. If the cap is bent, cracked, or shows signs of severe UV exposure/degradation discard and replace.
11. Use of the VariCap does not prevent all injuries if fell upon. This device is only meant to limit impalement into a persons body as long as it is used correctly. VariCap LLC and it's manufacture along with its distributors do not guarantee that no injury will occur if a person falls onto it.

Instillation Instructions:

1. To install the VariCap, place the cap over the exposed rebar and push down until the bar makes contact with the orange cap and seats itself. You will know to stop pushing down on the cap when you feel it make contact with the end of the rebar and it sits squarely on the bar and doesn't 'wobble'.

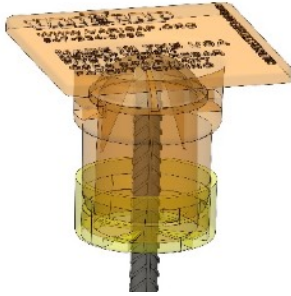


Figure 3



Figure 4

2. The VariCap should glide on with little resistance.
3. To remove the VariCap pull up on the cap until it is completely off the rebar. Inspect for damage prior to the next use.
4. To replace the yellow end cap pull the damaged one off with your hand. Then push a new end cap on by holding the orange base in one hand, the yellow end cap in the other, and force the yellow end cap onto the orange base until it “clicks” into place. Once “clicked” on, the yellow end cap should not come off easily and should spin freely around the orange base.
5. The ‘tabs’ on the yellow cap will sit over the ‘ridge’ on the orange base as shown here:

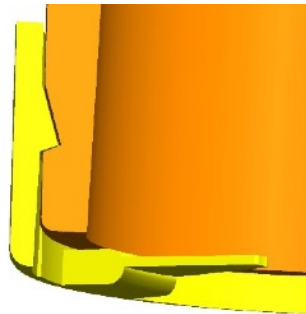


Figure 1

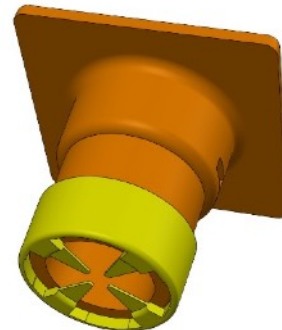


Figure 2

6. For further installation instruction check out our video on YouTube by clicking the following link. <https://youtu.be/lflw6pX3gHc>